

Tower Trail

The trail which is very well known by the locals and leads to the Village of Brezno, starts from the center of the Village of Tearce. The main direction is towards north/ northwest and it immediately begins with a climb along a wide unpaved road to the Village of Brezno. This part of the trail passes through an old chestnut forest, by which this region is recognizable. From the village along the trail leading to the locality "Tri Vode" we are heading to "Brezjansko Lake" from where we change the direction to south and we start with a mild climb to the place called "Brezjanski Livadi". From this point the trail enters into a thick forest belt and on the same level reaches the meadows that are located under the peak Brezjanski Kule. When the trail comes out on the meadows under the peak Brezjanski Kule, it merges with the trail that goes from the peak Brezjanski Kule to "Tri Vode" from where it extends south to the saddle under the peak Brezjanski Kule. From this point after only 60 meters of steep climbing in the direction towards east we arrive at the peak Brezjanski Kule.

TECHNICAL DATA

Starting point altitude: 515 m

Highest point: 1939 m

Destination altitude: 1939 m

Height difference: 1389 m

Duration of the tour: 5 hours

Length of the tour: 15 km

Trail difficulty: ■■■■□

Required level of

physical fitness: ■■■■□



SHAR MOUNTAIN

NATURE & CULTURE

www.sharmountain.com

Implemented by



TOWER TRAIL



SHAR MOUNTAIN

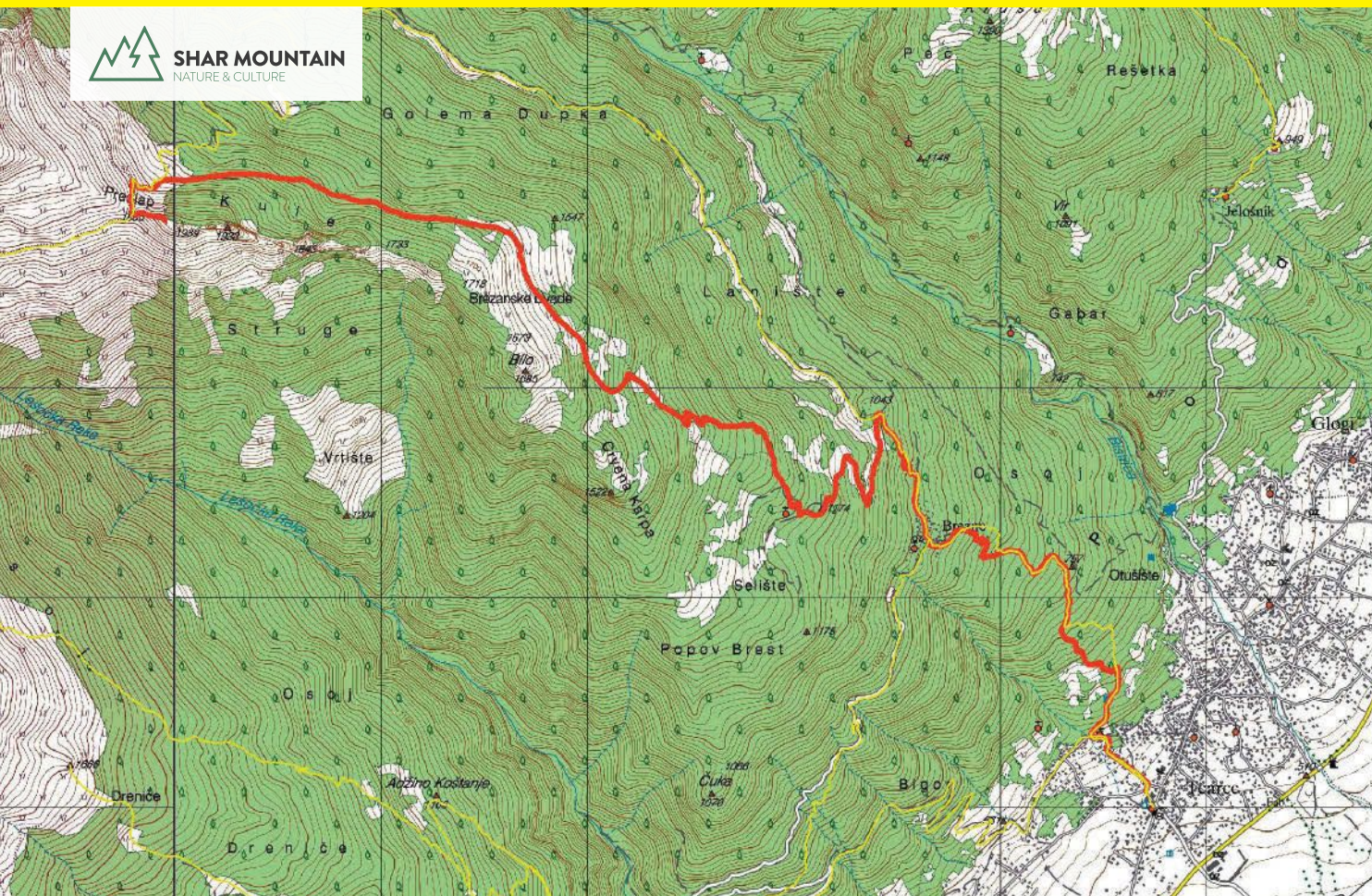
NATURE & CULTURE

This publication has been produced with the assistance of the European Union, within the project "Backing Regional Tourism Potentials" Grant contract No. 2018/396-513. The content of this publication is the sole responsibility of the implementing organizations and can in no way be taken to reflect the views of the European Union.



European
Union
Kosovo

Tower Trail



LEGEND

-  Trail line
-  Starting point of the trail
-  Finish point of the trail
-  You are here
-  Mountain hut, accommodation, family house B&B
-  Point of interest

TRAIL DESCRIPTION

Length: 15 km

Duration: 5 h

Height Difference: +1389 m

Highest Point: 1939 m

Starting Point:

N 42° 04' 32.74"

E 21° 03' 05.98"

Trail Markation:  